

# **PEACEPLUS Programme**

## **4.1 Collaborative Health and Social Care - Addiction Services**

### **Pre Application Workshop**



**Special EU Programmes Body**  
**Comhlacht na gClár Speisialta AE**  
**Special EU Skemes Boadie**

## PEACEPLUS Context: How did we get here?

- Support of the NI Executive, the Government of Ireland, the UK Government and the European Union.
- Building upon previous PEACE & INTERREG programmes.
- Renewed focus on peace and reconciliation.
- Ensuring all projects contribute to cross-border and economic and territorial development.



Special EU Programmes Body  
Comhlacht na gClár Speisialta AE  
Special EU Skemes Boadie

# How was PEACEPLUS Developed?

## Intensive review, research and public engagement

- Stakeholder engagement
- Public events – including specific events with young people
- Survey submissions
- Public consultation (2021)
- Bi-laterals with government north-south (ongoing)



# PEACEPLUS (2021-2027)

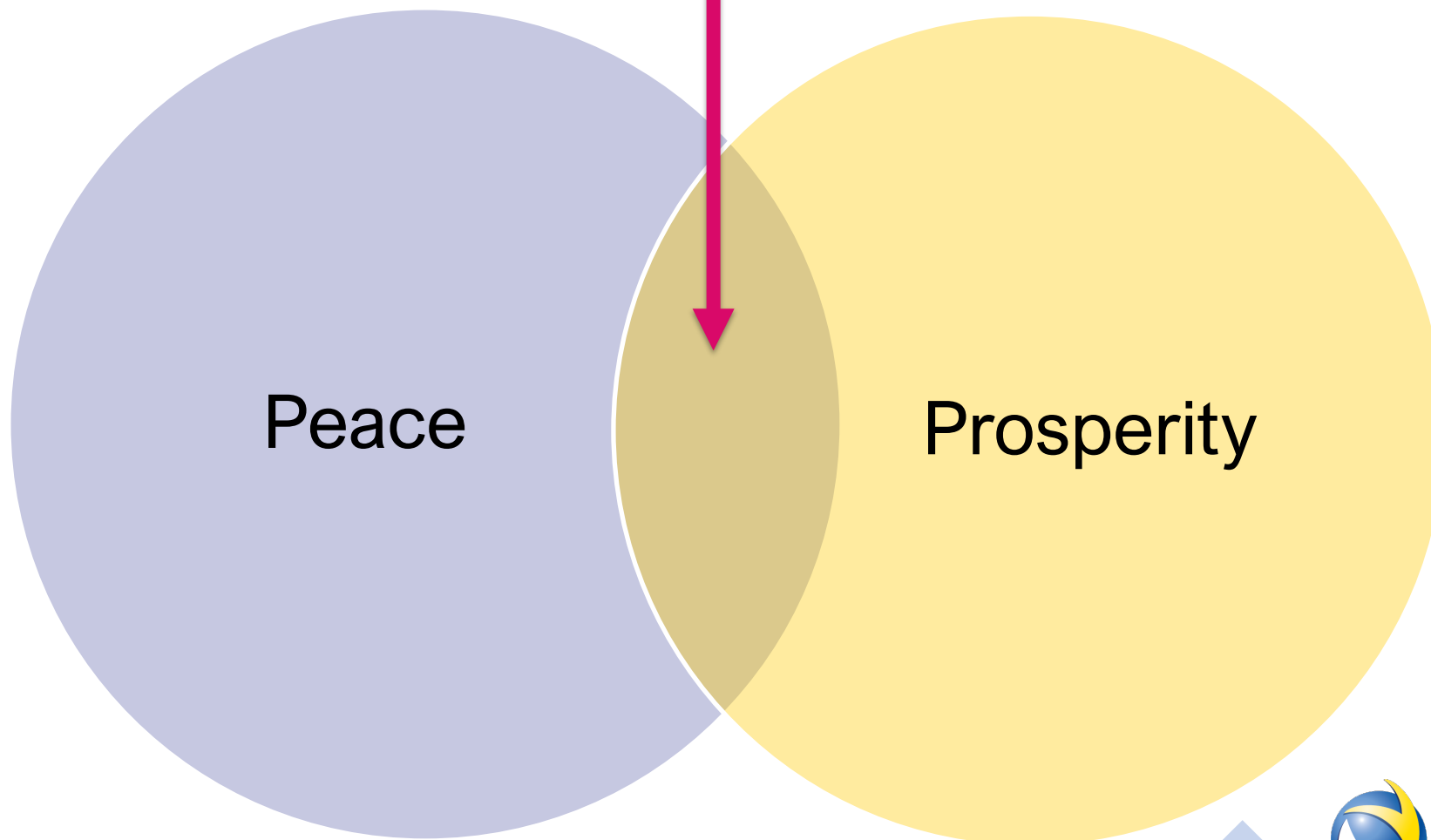


- Programme area: Northern Ireland & the border counties of Ireland
- Programme value: **€1.144 billion**
- Six themes, 22 investment areas
- Participation from partners outside the area





# PEACEPLUS



Special EU Programmes Body  
Comhlacht na gClár Speisialta AE  
Special EU Skemes Boadie

# Programme Overview: Where does Programme Area Skills Development fit in?

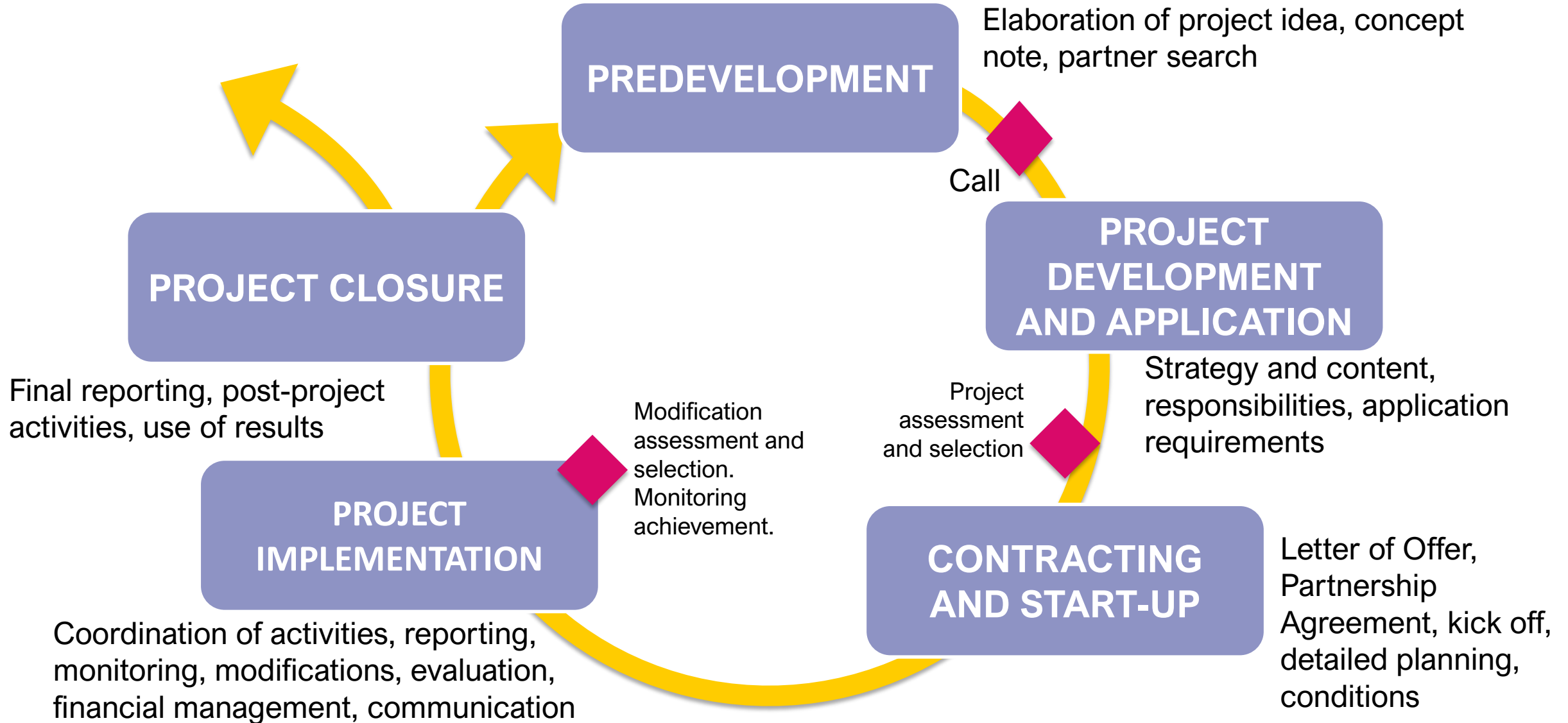
**Thematic  
Areas**

<p>Theme 1 Building Peaceful and Thriving Communities</p> <p>€250m</p>	<p>Theme 2 Delivering Socio-Economic Regeneration &amp; Transformation</p> <p>€170m</p>	<p>Theme 3 Empowering and Investing in Our Young People</p> <p>€123m</p>	<p>Theme 4 Healthy and Inclusive Communities</p> <p>€172m</p>	<p>Theme 5 Supporting a Sustainable Future</p> <p>€303m</p>	<p>Theme 6: Building and Embedding Partnership and Collaboration</p> <p>€52m</p>
--	---	--	---	---	--

**Investment Areas**

<p>1.1 Co-designed Local Community Peace Action Plans</p> <p>1.2 Empowering Communities</p> <p>1.3 Building Positive Relations</p> <p>1.4 Reimagining Communities</p>	<p>2.1 SME Development and Transition</p> <p>2.2 Innovation Challenge Fund</p> <p>2.3 Programme Area Skills Programme</p> <p>2.4 Smart Towns and Villages</p>	<p>3.1 Shared Learning Together Education Programme</p> <p>3.2 PEACEPLUS Youth Programme</p> <p>3.3 Youth Mental Health</p>	<p>4.1 Collaborative Health and Social Care</p> <p>4.2 Rural Regeneration and Social Inclusion</p> <p>4.3 Victims and Survivors</p>	<p>5.1 Biodiversity, Nature Recovery and Resilience</p> <p>5.2 Marine and Coastal Management</p> <p>5.3 Water Quality and Catchment Management</p> <p>5.4 Water Quality Improvement Programme</p> <p>5.5 Geothermal</p> <p>5.6 Transport</p>	<p>6.1 Strategic Planning</p> <p>6.2 Maintaining and Forging Relationships between Citizens</p>
---	---	---	---	--	---

# Project Lifecycle



## **Specific Objective**

*“Improving equal access to inclusive and quality services in education, training and lifelong learning through developing accessible infrastructure, including by fostering resilience for distance and on-line education and training”*

### **The Objective Will Address:**

“existing and emerging skills gaps, leading to equal access to inclusive and quality services and increasing cross-border labour mobility”

### **Resulting in:**

“the development of a flourishing Programme Area workforce, with skills better aligned to existing and future growth sectors and in line with public policy”





**An Roinn Sláinte**  
Department of Health



Department of  
**Health**

An Roinn Sláinte  
Mánnystrie O Poustie

# **PEACE PLUS**

## **Pre-Application Workshop**

### **Investment Area 4.1**

13 June 2023

**Jacqueline McDevitt**

EU Programmes & North-South Cooperation Branch  
Department of Health, Northern Ireland

**Mary T Hally**

North-South, EU & International Unit  
Department of Health, Ireland

# Department of Health NI : Overview

- Health and Social Care (HSC), which includes policy and legislation
- Business Groups
- Professional Groups
- Public Health
- Directorates
- Public Safety



# Dept of Health NI : Mission Statement

**To improve the health and social well-being** of the people of Northern Ireland through:

- a major programme of cross-government action to improve the health and well-being of the population and **reduce health inequalities.**
- **interventions involving health promotion and education** to encourage people to adopt activities, behaviours and attitudes leading to better health and well-being.
- a **population much more engaged** in ensuring its own health and well-being.
- ensuring provision of appropriate health and social care services, both in clinical settings and in the **community** through nursing, social work and other professional services.

# DoH NI : Health Priorities & Values

- Programme for Government
- New Decade New Approach
- Delivering Together
- Making Life Better
- Transforming Your Care
- Digital HSC Strategy
- No More Silos



**MAKING LIFE BETTER**

- **Access to health**
- **Inclusion and tackling disadvantage**
- **Early years**
- **Mental health and wellbeing**
- **Older people**
- **Physical health and wellbeing**
- **Capability and resilience**
- **Care**



# New Decade, New Approach

“greater focus on mental health and well-being”

“better health and wellbeing by tackling inequalities, building self-efficacy and combating poverty”

“supporting full implementation of the Bengoa review in health, the ‘Delivering Together’ and ‘Power to People’ healthcare transformation reports and delivering more care in the community”



# Our Branch Responsibilities:

North / South  
Cooperation

INTERREG VA  
and PEACE  
PLUS

European  
Networks

Horizon  
Europe



# Benefits of collaboration at EU Level



An Roinn Sláinte  
Department of Health



DoH

[www.health-ni.gov.uk](http://www.health-ni.gov.uk)



Special EU Programmes Body  
Comhlacht na gClár Speisialta AE  
Special EU Schemes Board



EUROPEAN  
AHA REFERENCE SITE

The logo of Eureggha, featuring a blue square with three yellow stars and the word "eureggha" in white lowercase letters. Below it, the text "European Regional and Local Health Authorities" is written in green.  
European Regional and Local Health Authorities





# Four UK Nations: European RSCN Awards, Brussels 2022





An Roinn Sláinte  
Department of Health

# Department of Health IE Vision

A healthier Ireland, with improved health and wellbeing for all, and with the right care delivered in the right place at the right time.



An Roinn Sláinte  
Department of Health

# Department of Health IE

## Mission

To improve the health and well-being of people in Ireland by

- supporting people to lead **healthy and independent lives**
- ensuring the delivery of **high-quality and safe** health and social care
- creating a more **responsive, integrated and people-centred** health and social care service
- promoting **effective and efficient management** of the health and social care services and ensuring the **best value** from health system resources





**An Roinn Sláinte**  
Department of Health

## Strategic Priorities

What the Department will prioritise between 2021-2023



Manage  
COVID-19 and  
promote public  
health



Expand and  
integrate  
care in the  
community



Make access  
to healthcare  
fairer and  
faster



Improve  
oversight and  
partnership in  
the sector



Become an  
organisation fit  
for the future



An Roinn Sláinte  
Department of Health

# Department of Health IE Functions

The Department serves the public and supports the Minister for Health, Ministers of State and the Government by

- providing **leadership and policy direction** for the health sector to improve health outcomes;
- undertaking **governance and performance oversight** to ensure accountable and high-quality services;
- **collaborating to achieve health priorities** and contribute to wider social and economic goals;
- creating an **organisational environment** where high performance is achieved, collaborative working is valued and the knowledge and skills of staff are developed and deployed.



An Roinn Sláinte  
Department of Health

# Department of Health IE Leadership & Structure

Minister for Health **Stephen Donnelly** leads the Department with support of Ministers of State

- **Mary Butler** - Mental Health and Older People
- **Hildegarde Naughton**- Public Health, Wellbeing and the National Drugs Strategy

The Department is organised into nine divisions including the Office of the Chief Medical Officer and the Office of the Chief Nursing Officer.

The Department engages with its agencies, partners across Government and public and private sector organisations.





An Roinn Sláinte  
Department of Health

# Department of Health IE Key Policies



# Sláintecare.

Right Care. Right Place. Right Time.



Riailtas na hÉireann  
Government of Ireland



An Roinn Sláinte  
Department of Health

# Department of Health IE Key Policies

hi  
Healthy Ireland

Sláintecare.

**Healthy Ireland**  
Strategic Action Plan 2021–2025

Building on the first seven years  
of implementation

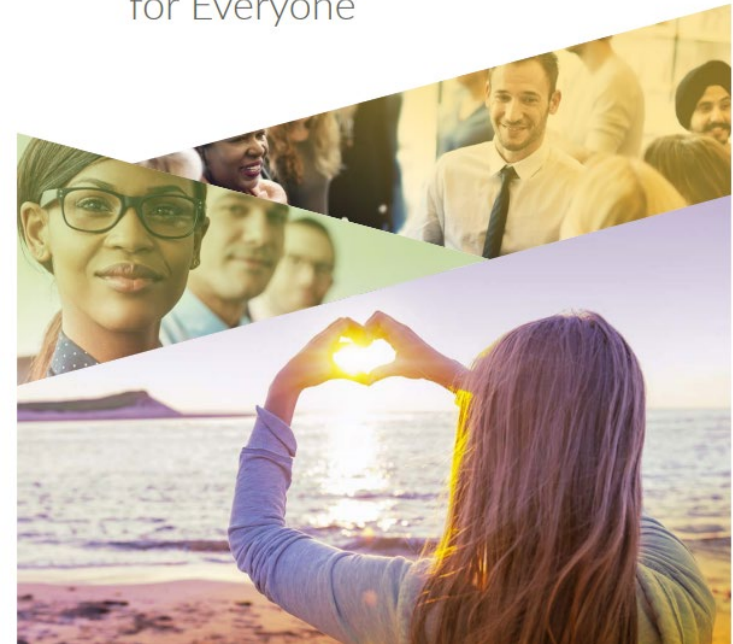
Rialtas na hÉireann  
Government of Ireland



Rialtas na hÉireann  
Government of Ireland

## Sharing the Vision

A Mental Health Policy  
for Everyone





An Roinn Sláinte  
Department of Health

# Ireland's Priorities

**Programme  
for Government**  
Our Shared Future



**Project  
Ireland 2040**  
*Building Ireland's  
Future*



**Shared Island  
Initiative**





An Roinn Sláinte  
Department of Health

# Shared Island Initiative



**Building a Shared Island**



**Shared Island Dialogues**



**Shared Island Research**



An Roinn Sláinte  
Department of Health

# North-South, EU & International Unit Responsibilities

## North-South & UK

North-South Cooperation

UK Relations

Scotland

Brexit Implications

## EU & Bilateral

European Union

Bilateral Relations

## International

World Health Organisation

UN Bodies

Council of Europe

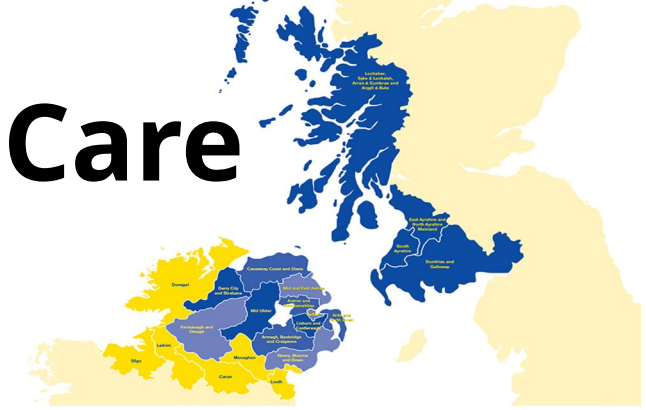
# EU Funding Programmes



- **DoH IE and DoH NI:** collaborate extensively as Accountable Departments for the Health Themes for ERDF Funded Programmes for the border counties of Ireland and Northern Ireland.
- **INTERREG VA (2014-2023):**
  - Health and Social Care €58.5m – allocated to 10 projects
  - Outputs which have exceeded target as of **June 2022** include:
    - **17,551** patients benefitting from scheduled and unscheduled care streams (target 15,000)
    - **5,549** patients availing of e-health interventions to support independent living in caring communities (4,500)
    - **2,742** 'at risk' patients benefitting from a shared cross-border framework and service
- **Learnings:**
  - Digital Innovation – adaptability during COVID-19
  - Mental Health Resilience programmes to tackle social isolation – both emotionally and physically



# INTERREG VA: Health and Social Care



- Changing Lives Initiative
- Community Health Sync – Population Health (**CoH-Sync**)
- Connecting Citizens, Communities and Services (**mPower**)
- Connecting Services, Citizens and Communities (**Acute Services**)
- Cross-Border Healthcare Intervention Trials in Ireland Network (**CHITIN**)
- Implementing Stimulating Innovation in the Management of Polypharmacy & Adherence through the Years (**iSIMPATY**)
- Innovation Recovery (**I-Recovery** Project)
- Multiple Adverse Childhood Experiences (**MACE**)
- Need to Talk (NTT)
- Outreach and Navigation for Social Inclusion and Digital Engagement Project (**ONSIDE**)

# PEACE PLUS Programme 2021-2027

- € 97m Investment Area 4.1 – Collaborative Health and Social Care
- €80m available for this call and €17m for Addiction Treatment call
- DOH IE and DOH NI as **Accountable Departments** will assess programme development and progress of successful projects through the lifecycle of the programme

## Applications should

- align with the relevant Government and EU Strategies/Policies
- assess the potential for proposals to continue in the future
- be supported by evidence and include regular evaluation processes



**Collaborative  
Health and  
Social Care:  
Support for  
projects which...**

**Meet the EU policy objective:**

Of a more social and inclusive Europe implementing the European Pillar of Social Rights

**Meet DoH specific objective:** of ensuring equal access to health care and fostering resilience of health systems, including primary care, and promoting the transition from institutional to family and community-based care

**Result in:** equal access to health care and fostering resilience of health systems, including primary care, and promoting the transition from institutional to family- and community-based care



**An Roinn Sláinte**  
Department of Health



# IA 4.1: key considerations

- The Importance of an **Integrated Approach**
- The Adoption of **New Technologies** to Improve Access to Services
- The Need to Tackle **Health Inequalities**
- The Opportunity to Develop and Deliver **Cross-Border Health and Social Care Research Initiatives**
- The Requirement for Specific **Mental Health Interventions**
- Projects should **add value** to existing services
- Programme acts as a **test bed** for new/pilot projects



## Further key considerations when developing proposals:

- Potential **synergies** with key priorities for the first call (eg suicide prevention and mental health, both children's and adults).
- Programme being underpinned by three **Horizontal Principles**: Sustainable Development, Non-Discrimination and Equality between Men and Women; and Equal Opportunities.
- Collaboration opportunities across other Themes (eg Empowering and Investing in Young People).





## Types of CHSC actions to be supported:

- Initiatives to deliver **cross-community and cross-border collaborative approaches** to health and social care service delivery, in clinical areas identified as most suitable to a cross-border service delivery model
- Development and implementation of **support and co-operation services on a cross-border basis**, for community and voluntary organisations involved in the provision of health and social care services within their own communities.



## Addiction Services

- The Health and Mental Wellbeing of citizens and communities has been impacted by the trauma arising from the Troubles, resulting in higher rates of mental health illness than in other parts of the UK.
- Research in this area highlights a need to support specific mental health interventions, especially within those areas where there are benefits to collaborative, cross-border management approaches. ***Suitable areas identified include addiction services and suicide prevention initiatives.***

***Addiction is defined as an inability to stop using a substance or engaging in a behaviour even though it is causing psychological and physical harm***



## Addiction Services (cont'd)

Initiatives through PEACE PLUS should be complementary to existing strategies and policies which include:

- ***“Reducing Harm, Supporting Recovery: A Health Led Response to Drug and Alcohol Use in Ireland 2017-2025”*** in Ireland
- Northern Ireland's 10-year Substance Use Strategy ***“Preventing Harm, Empowering Recovery”*** launched September 2021.

It will also be important to ensure any related investment reflects the policy focus of ‘dual diagnosis’. This refers to assessment and treatment of any interlinking mental health conditions in those presenting with addiction issues. Progress has been made in this regard in Ireland, with the opportunity to share learning and best practice with colleagues in Northern Ireland.



An Roinn Sláinte  
Department of Health



Special EU Programmes Body  
Foras Um Chláir Speisialta An AE  
Boord O Owre Ocht UE Projects



DoH

[www.health-ni.gov.uk](http://www.health-ni.gov.uk)

## In summary:

The **purpose** of this €17 million PEACE PLUS investment is to:

- **build upon existing and new cross-border collaborative approaches** to health and social care delivery models
- deliver an **increased number of episodes of care** across the Programme area to improve Health and Mental Wellbeing, aimed at reducing addiction and substance use issues in the region
- support the development of innovative community based healthcare interventions which complement statutory provision (including social enterprise models)

**Projects should be cross-border in nature** by, for example:

- Using staff from both sides of the border
- Being open to users on either side of the border
- Using a shared approach/design on both sides of the border

**Health and social care interventions, services and initiatives should be new and not continuations of existing services**



## **Theme 4: Healthy and Inclusive Communities**

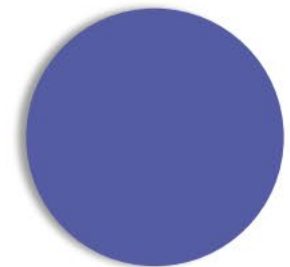




# **Collaborative Health and Social Care Programme**

---

## **OVERVIEW OF AREA 4.1**



# Collaborative Health and Social Care

## Specific Objective

*“To ensure equal access to health care and fostering resilience of health systems.”*

### **Resulting in:**

*“an increase in the number of ‘episodes of care’ delivered on a cross-border basis”*





## PEACEPLUS

### **What does Collaborative Health and Social Care seek to achieve?**

This investment area is an area in which collaborative cross border approaches are proven to deliver considerable benefits to the citizen and the Programme area.

#### ● **How?**

Through building upon existing collaborative relationships and services on a cross-border basis.





# Collaborative Health and Social Care

## Who?

- A suitable cross-border partnership with the capacity to deliver on all of the outputs, results and actions detailed is required.
- A partnership able to develop solutions and have the capacity/influence to improve the health and wellbeing of people living in the Programme area.
- A partnership able to develop and implement the project within the project's lifetime (4 years).



# Collaborative Health and Social Care

## Scope and Range

### The scope may include:

- **Action 2: Initiatives to include the development and delivery of new treatment facilities and programmes designed to address the trauma of the Troubles on the health and mental wellbeing of citizens and communities, by adopting a strengths-based, cross community and cross border mental and emotional resilience and recovery model.**





# **Collaborative Health and Social Care**

## **Key considerations:**

- **The importance of an integrated approach and dual diagnosis**
- **The adoption of new technologies to improve access to services**
- **The need to tackle health inequalities**
- **Focus on peace and prosperity**



## Budget and Grant Rate

**Total Budget available for Investment Area 4.1 Action 2. is €17million**

(Inclusive of €13.6 million ERDF and €3.4 million governmental match funding).

100% of eligible project costs can be sought

Further information around this is contained within the call document



## Indicators Adopted for 4.1 Action 2

Output  
Indicators

- **2** jointly developed solutions

Result  
Indicators

- **2000** beneficiaries of jointly developed and delivered health and social care solutions



## **Collaborative Health and Social Care Measuring Change**

Your project must result in new jointly developed solutions. In addition, PEACEPLUS requires you to consider, integrate and demonstrate how this project contributes to a more peaceful, prosperous and stable society in N. Ireland and the border counties of Ireland.

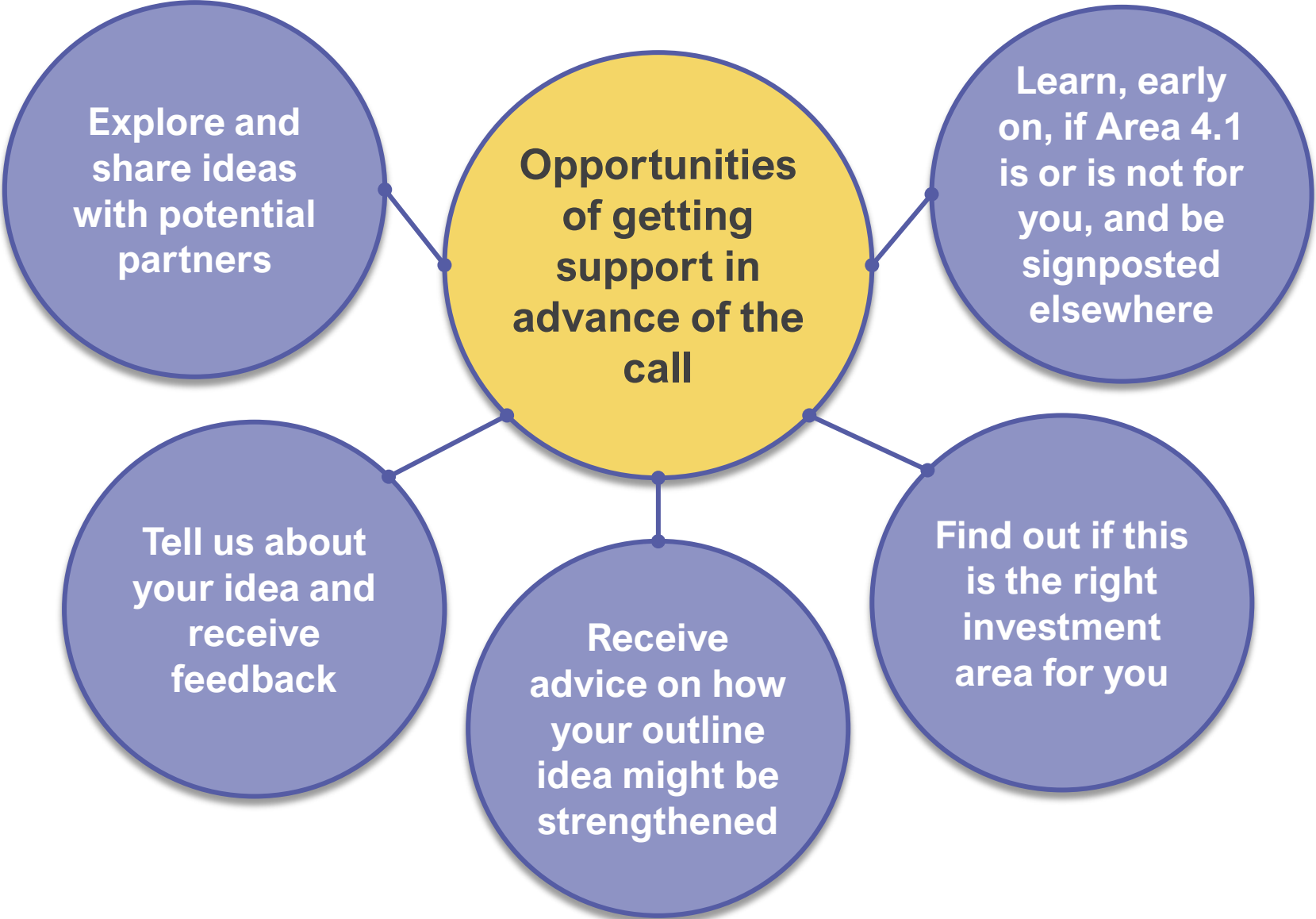


## **PRE-APPLICATION SUPPORT & CONCEPT NOTE**

---



# Prepare and Plan in Advance





## **Collaborative Health and Social Care**

---

## **HOW TO BUILD A STRONG PROPOSAL**

## **Collaborative Health and Social Care**

### **Concept Note**

**From today, any organisation interested in 4.1 (Action 2) may complete and submit a Concept Note for comment, advice and support.**

#### **The Concept Note**

- Covers some (but not all) of the questions which will be in the application-proper:
- Will help you put in place the foundations of your project, so you are better prepared when the call opens
- **Is not a formal application;**
- **Is not scored**



## **Collaborative Health and Social Care Concept Note Outline**

- The uncompleted form is short, 3 pages, with one page of guidance.
- Provide high level project details and answer 5 questions, each between 300-500 words.
- Advice is available pre- and post-completion.
- Please complete and return it **no later than July 14<sup>th</sup>** to [myriam.fearon@seupb.eu](mailto:myriam.fearon@seupb.eu)



## **Collaborative Health and Social Care**

---

## **HOW TO BUILD A STRONG PROPOSAL**



# Concept Note: Question 1

## About Your Project

1. How has need been identified for your project?
2. How does your project align with what PEACEPLUS, and in particular Area 4.1 (Action 2), is trying to achieve? **[your project should result in a number of beneficiaries of jointly developed and delivered health and social care solutions]**

### To note, supported projects should:

- Contribute to the more efficient delivery of health and social care services across the Programme area;
- Enable people to access quality health care and social services in the most appropriate setting to their needs; and
- Build upon existing collaborative cross border relationships and service provision.

## Concept Note: Question 1 Continued

3. The extent to which your project has been informed by and or aligns with best practice by:

- Incorporating an integrated approach;
- Adopting new technologies to improve access to services;
- Tackles health inequalities
- Delivers peace and prosperity

## Concept Note: Question 2

- At a Programme level for this Investment Area, the **output indicator** is for **2 jointly developed solutions**. Your project's target will contribute to this output indicator. **Note:** Health and social care interventions, services and initiatives should be new and not continuations of existing services.

### 2. How many people will be engaged in your project?

- At a Programme level for this Investment Area, the **result indicator** is for **2,000 beneficiaries of jointly developed and delivered health and social care solutions**. Your project's target will contribute to this result indicator. **Note:** Beneficiaries must relate to the new solutions developed and implemented upon the output indicator and can only be counted once they receive the course of the intervention, service or initiative i.e., an episode of care

## **Concept Note: Question 3**

### **Cross Community and Cross Border**

**1. What geographical area/s will your project cover?**

**2. How your project is cross-border on the basis of:**

- Using staff from both sides of the border;
- Being open to users on either side of the border;
- Using a shared approach / design on both sides of the border.

## **Concept Note: Question 4**

### **No project will result in duplication or displacement of existing provision**

- Have the issues of duplication and displacement been considered for your project?
- Is your project likely to impact upon and / or complement similar existing or planned provision?
- How will these issues be avoided or mitigated?



# Concept Note: Question 5

## Proposed Team, Partnership, and Implementing Arrangements

- Staffing – who is doing what?
- Suitable experience and qualifications?
- Necessary capacity?
- Practical arrangements for implementation?
- Rationale for partnership composition / previous experience?
- Technical support requirements?
- Structure of partnership?
- Risk assessment?



## Concept Note: Question 6

### Value for Money

- Demonstrate how staff positions are advertised at the appropriate grade, competitive tendering processes applied etc;
- Use this section to provide detail on the budget requested, the assumptions applied and how it demonstrates economic use of public resources.
- How will you ensure the long-term impact of the funded project and what is your exit strategy?



## **Collaborative Health and Social Care Lead Partner Role**

- Coordination
- Financial management
- Reporting
- Communication
- Training
- Policies & Procedures

In short, accepts overall responsibility for ensuring implementation of entire project

## **Collaborative Health and Social Care**

### **Other Things to Bear in Mind**

- Take this time to build your partnership:
  - be clear on who is doing what
  - build a framework for communications and for M&E.
- Don't bite off more than you can chew: can you really deliver on this scale?
- Think about finance: can you manage the cash flows?
- Have clarity of purpose; your project must always consider its focus on building peace and prosperity for the region.



## **TIMESCALES**

---



# What next?

**Pre-Development Support**

Now available for Area 4.1 of the PEACEPLUS Programme.

**Concept Note**

Downloadable from website – complete and return as soon as you can (**14<sup>th</sup> July 2023**)

**Feedback**

Aim to provide feedback within 15 working days

**Further support**

Further support will depend upon both the fit and quality of what is outlined in the concept note

● **Any Questions:** Contact [myriam.fearon@seupb.eu](mailto:myriam.fearon@seupb.eu)

# In Due Course...

In due course, the following documents will be made available and should be consulted before completing the formal application form:

- **PEACEPLUS Cooperation Programme**
- **The Programme Manual**
- **Guide for Applicants**
- **Call for Applications to Area 4.1**

**The Programme Overview is available**





## Questions

---