



THEME:

Cross Border Health & Social Care

FUNDING(ERDF+MATCH)

€10,252,676.21 with
Scottish contribution of
€232,543.82

MATCH FUNDERS:

Department of Health
Northern Ireland

Department of Health
Ireland

Scottish Ambulance Service

LEAD PARTNER:

Health Service Executive

PROJECT PARTNERS

Western Health and Social Care Trust, Southern Health and Social Care Trust, Health and Social Care Board, Public Health Agency, National Ambulance Service, NI Ambulance Service and the Scottish Ambulance Service

Start Date: 01/09/2016

End Date: 31/12/2022

 www.cawt.com/acute

 www.facebook.com/CAWTCrossBorder/

 [@CAWTCrossBorder](https://twitter.com/CAWTCrossBorder)

SPECIAL EU PROGRAMMES BODY

Project Case Study: Acute Services

The project aims to assess and treat higher volumes of patients more effectively both in scheduled and unscheduled care pathways through improved / reformed service delivery models on a cross border basis. Scheduled care will focus on the specialties of dermatology, urology and vascular. Unscheduled care initiatives include a new Community Paramedic service, Clinical Decision unit/ Direct Access Unit, a Community Cardiac Investigations Service and a Community Consultant Physician led service. Innovative technologies will be used where appropriate to deliver the new services in this project. In addition, specialist training for staff will be delivered. It is planned that 15,000 patients will benefit from these innovative services.

"I had heard about the new service in Omagh just 25 miles from my home in Donegal where a patient could have the procedure without having to stay overnight in hospital. I was seen by a consultant in my local outpatients in Letterkenny Hospital. I was scanned and told I was suitable for treatment. I went to the new Hospital in Omagh and was greeted by very friendly nursing staff that looked after me very well both before and after I received the treatment. It only took three hours from beginning to end. I was pain free throughout my time at the Hospital. I am symptom free since and I would recommend this service to anyone who suffers as I did."

~Cross-Border Vascular Patient~



CAWT Acute 2: Pictured at the launch of the CAWT cross border Acute Hospital Services Project. Left to right: Dr Margaret Whoriskey, Scottish Government; Bernie McCrory, Chief Officer, CAWT; Edel O'Doherty, Deputy Chief Officer, CAWT; Gina McIntyre, CEO, Special EU Programmes Body (SEUPB) and Alastair Campbell, Director of Secondary Care, Dept of Health Northern Ireland.



SPECIAL EU PROGRAMMES BODY

Project Case Study: Acute Services

THEME:

Cross Border Health & Social Care

FUNDING(ERDF+MATCH)

€10,252,676.21 with
Scottish contribution of
€232,543.82

MATCH FUNDERS:

Department of Health
Northern Ireland

Department of Health
Ireland

Scottish Ambulance Service

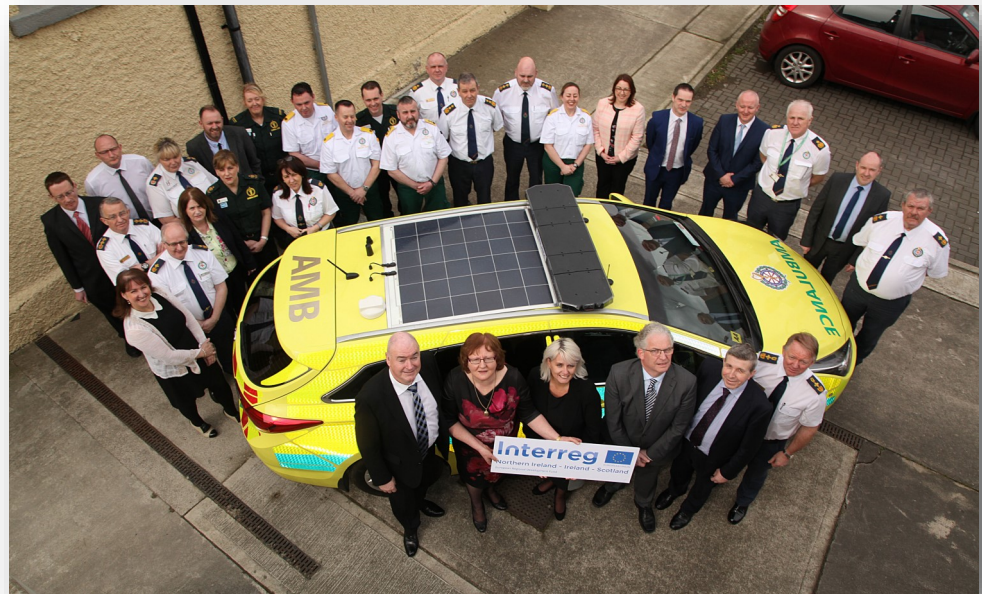
LEAD PARTNER:

Health Service Executive

PROJECT PARTNERS

Western Health and Social Care Trust, Southern Health and Social Care Trust, Health and Social Care Board, Public Health Agency, National Ambulance Service, NI Ambulance Service and the Scottish Ambulance Service

This project will increase acute episodes of care to patients, through improved/reformed service delivery on a cross-border basis. Initially the focus will be on the enhancement of cross border services for dermatology and then rolling out to other specialties such as urology, vascular etc. The project will involve the development of more efficient patient pathways during the pre-hospital phase such as the creation of community paramedic hubs to see, assess and treat patients in their own communities thus avoiding transportation to other medical facilities.



Launching the CAWT cross-border Community Paramedic Project involving the Northern Ireland Ambulance Service, Scottish Ambulance Service and Ireland's National Ambulance Service.

Start Date: 01/09/2016

End Date: 31/12/2022



www.cawt.com/acute



www.facebook.com/CAWTCrossBorder/



@CAWTCrossBorder

Key Project Outputs:

- 1) Establish cross-border frameworks for scheduled and unscheduled care streams, to improve utilisation of scarce human physical and financial resources
- 2) Patients benefitting from scheduled and unscheduled care streams (including utilisation of e-health e.g. patient records and support services): 15,000 (of which 2,500 to be delivered by 2018)
- 3) Specialist training and development programmes for cross-border area health and social care providers (Staff Trained): 338